

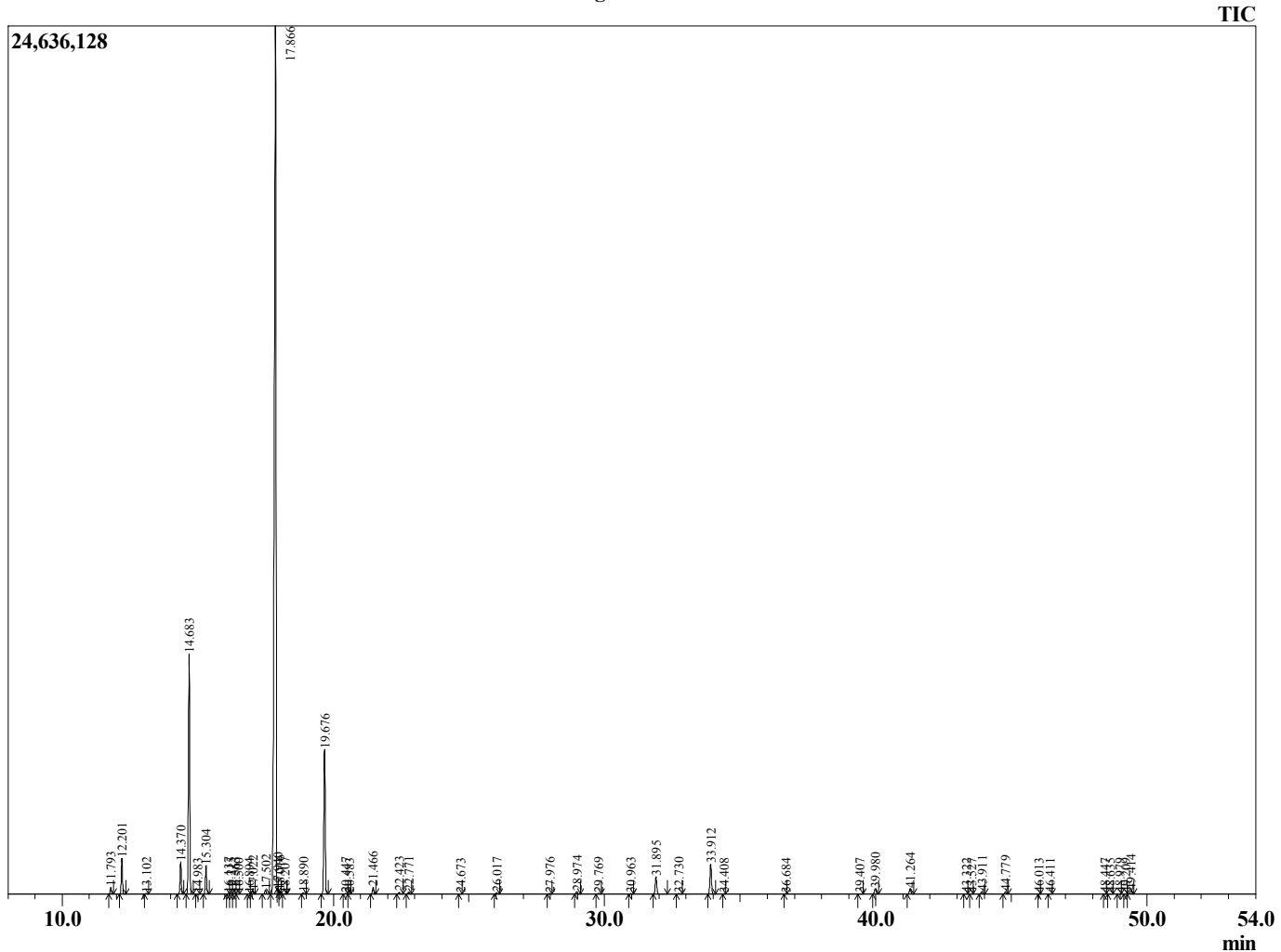
Sample Information

Sample Type PM : Essential Oil  
 Sample Name : Citrus limon

Lemon  
 Lot# ITE37-EW  
 Country: Italy



Chromatogram Citrus limon



R.Time	Name	Area%
11.793	alpha-Thujene	0.34
12.201	alpha-Pinene	1.80
13.102	Camphene	0.05
14.370	Sabinene	1.75
14.683	beta-Pinene	13.46
14.983	Unidentified	0.02
15.304	Myrcene	1.55
16.137	Octanal	0.05
16.215	Pseudolimonene	0.03
16.363	alpha-Phellandrene	0.03
16.500	delta-3-Carene	0.01
16.894	1,4-Cineole	0.01
17.022	alpha-Terpinene	0.19
17.502	para-Cymene	0.27
17.866	Limonene	65.70
17.940	beta-Phellandrene	0.02
18.016	1,8-cineole	0.08
18.207	cis-beta-Ocimene	0.02
18.890	trans-beta-Ocimene	0.07
19.676	gamma-Terpinene	8.73
20.447	n-Octanol	0.03
20.583	Pinol	0.01
21.466	Terpinolene	0.39
22.423	Linalool	0.13
22.771	Nonanal	0.13
24.673	cis-Limonene oxide	0.01
26.017	Citronellal	0.08
27.976	Terpinen-4-ol	0.05
28.974	alpha-Terpineol	0.17
29.769	Decanal	0.06
30.963	Nerol	0.03
31.895	Neral	1.18
32.730	Geraniol	0.04
33.912	Geranial	2.01
34.408	Perillaldehyde	0.01
36.684	Undecanal	0.01
39.407	Citronellyl acetate	0.03
39.980	Neryl acetate	0.38
41.264	Geranyl acetate	0.37
43.322	Dodecanal	0.01
43.527	cis-alpha-Bergamotene	0.01
43.911	beta-Caryophyllene	0.19
44.779	trans-alpha-Bergamotene	0.17
46.013	trans-beta-Farnesene	0.01
46.411	beta-Santalene	0.01
48.447	Valencene	0.01
48.635	Bicyclogermacrene	0.02
48.979	cis-alpha-Bisabolene	0.01
49.209	(E,E)-alpha-Farnesene	0.01
49.414	beta-Bisabolene	0.26
		100.00