

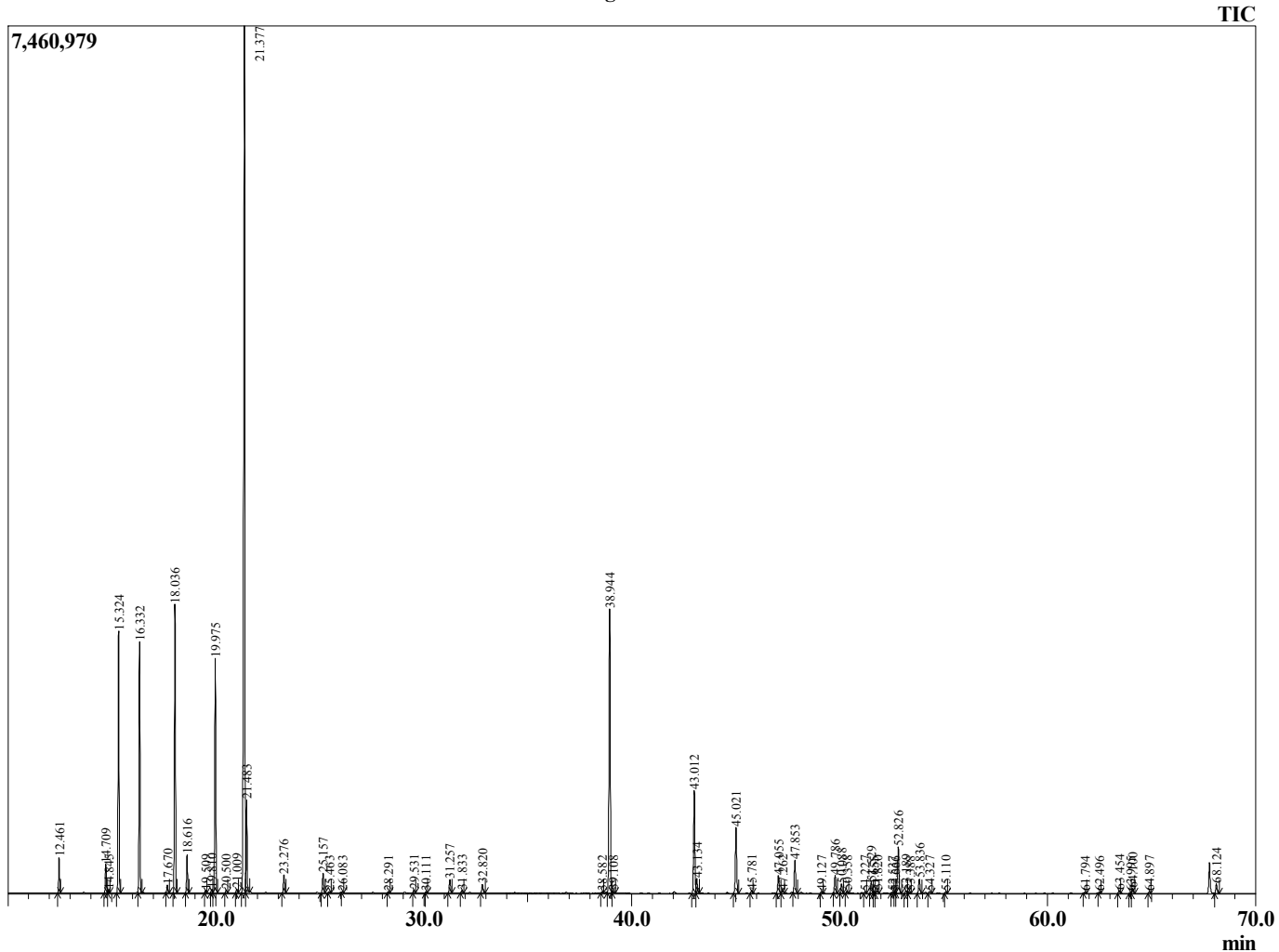
Sample Information

Sample Type : Essential Oil
 Sample Name : Abies alba

Fir Silver Needle
 LOT# ASE12-EW
 Country: Austria



Chromatogram Abies alba



R.Time	Name	Area%
12.461	Santene	0.90
14.709	Tricyclene	0.81
14.845	Thujene <alpha->	0.07
15.324	Pinene <alpha->	7.71
16.332	Camphene	7.47
17.670	Sabinene	0.25
18.036	Pinene <beta->	8.97
18.616	Myrcene	1.16
19.509	Octanal	0.06
19.810	Phellandrene <alpha->	0.11
19.975	3-Carene	7.50
20.500	Terpinene <alpha->	0.09
21.009	Cymene <para->	0.13
21.377	Limonene	33.40
21.483	Phellandrene <beta->	2.70
23.276	Terpinene <gamma->	0.61
25.157	Terpinolene	0.69
25.463	Dehydro-p-cymene	0.06
26.083	Linalool	0.03
28.291	4-Acetyl-1-methylcyclohexene	0.05
29.531	Camphor	0.11
30.111	Terpineol <trans-beta->	0.03
31.257	Borneol	0.47
31.833	Terpinen-4-ol	0.08
32.820	Terpineol <alpha->	0.33
38.582	Terpinyl acetate isomer	0.05
38.944	Bornyl acetate	11.10
39.108	Isobornyl acetate	0.07
43.012	Terpinyl acetate <alpha->	3.90
43.134	Terpinyl acetate <beta->	0.56
45.021	Coapene <alpha->	2.64
45.781	Cubebene <beta->	0.12
47.055	Dodecanal	0.69
47.262	Junipene	0.11
47.853	Caryophyllene <trans-beta->	1.32
49.127	Vestitenone E	0.06
49.786	Himachalene <alpha->	0.71
50.088	Humulene <alpha->	0.37
50.358	Alloaromadendrene	0.07
51.227	Cadina-1(6),4-diene <trans->	0.07
51.529	Himachalene <gamma->	0.45
51.655	Germacrene D	0.04
51.820	Himachala-1,4-diene <11aH>	0.11
52.537	Bicyclogermacrene	0.04
52.666	Muuroloene <alpha->	0.03
52.826	Himachalene <beta->	1.87
53.189	Bisabolene <beta->	0.11
53.388	Himachalene <a-dehydro-ar>	0.04
53.836	Cadinene <delta->	0.57
54.327	Sesquiterpene	0.09
55.110	Bisabolene isomer	0.06
61.794	Himachalol <beta->	0.05
62.496	Atlantone <Z-gamma>	0.05
63.454	Himachalol <allo>	0.14
63.995	Deodarone (4R,8R)	0.05
64.100	Himachalol <allo>	0.20

R.Time	Name	Area%
64.897	Atlantone <Z-alpha>	0.08
68.124	Atlantone <E-alpha>	0.39
		100.00