



Essential Validation Services





Sample:

Client: | Appalachian Valley Natural Products
Sample: | Myrtle Leaf (Myrtus communis)
Batch # | TNE6-EG
CAS Number | 84082-67-7
Type: | Essential Oil

Conclusion:

- No adulterants, diluents, or contaminants were detected via this method.
- This oil meets the expected profile for genuine essential oil of Myrtle Leaf (Myrtus communis).



X

Validated By:

Essential Validation Services

747 SW 2nd Ave, Gainesville, FL 32601

Phone: 317-361-5044 E-mail: Adam@essentialvalidationservices.com

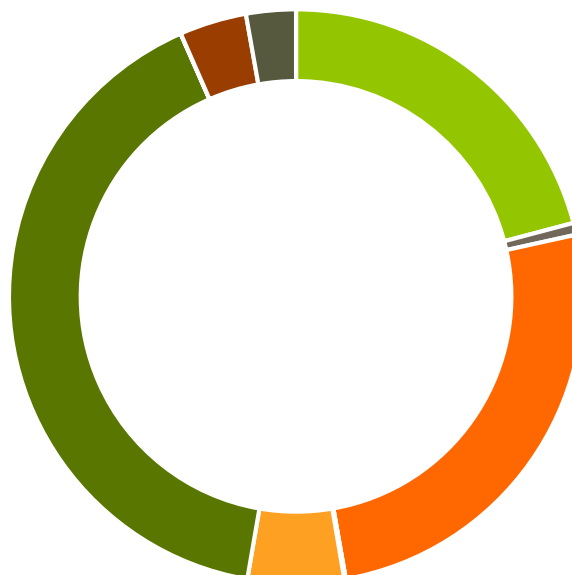
Summary of Analyses

A fresh sample of Myrtle Leaf (Myrtus communis) Essential Oil (10 uL in .5to.5 mL Hexane + ETOH) was prepared and analyzed via split injection GC/EI-MS.

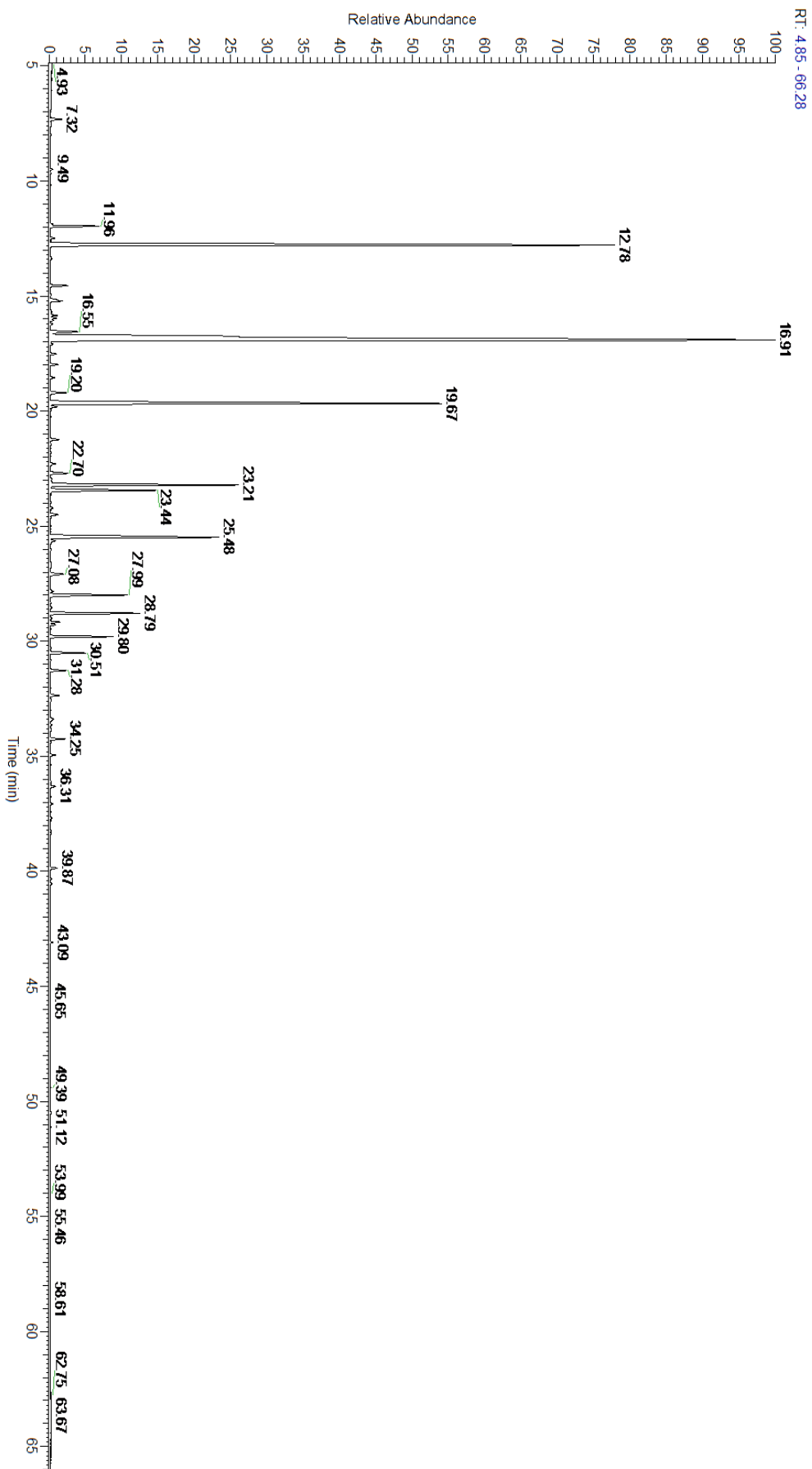


Main Compounds	Percentages
1,8-Cineole (Co-Eluting)	37.88%
alpha-Pinene	18.30%
Linalool	12.59%
Geraniol (Co-Eluting)	5.73%
alpha-Terpineol	5.40%
Estragole	2.92%
alpha-Terpinyl acetate	2.27%
Myrtenyl acetate	2.03%
Geranyl acetate	1.52%
Isobutyl isobutyrate	1.10%
para-Cymene	0.88%
Methyl Eugenol	0.86%
Terpinen-4-ol	0.48%

Monoterpenes	Sesquiterpenes	Monoterpenols	Sesquiterpenols	Ketones
20.88%	0.67%	25.68%	0.00%	0.08%
Esters	Ethers	Aldehydes	Phenols	Other
5.41%	40.69%	0.01%	3.78%	2.80%



- Monoterpenes
- Sesquiterpenes
- Monoterpenols
- Sesquiterpenols
- Ketones
- Esters
- Ethers
- Phenols
- Other





Total Percentage		97.25%			
Peak Number	RT	Area %	Compound Name	RI	Chemical Family
1	9.49	0.05%	trans-Hex-3-en-1-ol	844.00	Aliphatic Alcohol
2	9.66	0.01%	(E)-2-Hexenal	846.00	Aliphatic Aldehyde
3	11.96	1.10%	Isobutyl isobutyrate	908.00	Aliphatic Ester
4	12.48	0.11%	alpha-Thujene	927.80	Monoterpene
5	12.78	18.30%	alpha-Pinene	936.10	Monoterpene
6	13.37	0.07%	Camphene	950.30	Monoterpene
7	14.55	0.41%	beta-Pinene	974.00	Monoterpene
8	14.97	0.02%	6-methyl-5-hepten-2-one	982.00	Aliphatic Ketone
9	15.21	0.40%	trans-Dehydroxy linalool oxide	990.50	Monoterpene Ether
10	15.69	0.06%	alpha-Phellandrene	1002.00	Monoterpene
11	15.84	0.18%	cis-Dehydroxylinalool oxide	1006.00	Monoterpenol
12	15.96	0.16%	delta-3-Carene	1008.00	Monoterpene
13	16.06	0.08%	Isoamyl isobutyrate	1007.00	Aliphatic Ester
14	16.22	0.06%	alpha-Terpinene	1014.00	Monoterpene
15	16.55	0.88%	para-Cymene	1024.30	Monoterpene
16	16.91	37.88%	1,8-Cineole	1031.80	Monoterpene Ether
17	16.92	Co-Eluting	Limonene	1029.50	Monoterpene
18	17.10	0.05%	(Z)-beta-Ocimene	1037.80	Monoterpene
19	17.52	0.15%	(E)-beta-Ocimene	1047.70	Monoterpene
20	17.98	0.21%	gamma-Terpinene	1054.00	Monoterpene
21	18.54	0.12%	cis-Linalool oxide (furanoid)	1075.10	Monoterpenol
22	19.20	0.42%	Terpinolene	1092.10	Monoterpene
23	19.67	12.59%	Linalool	1099.00	Monoterpenol
24	19.81	0.20%	2-Methylbutyl-2-methylbutyrate	1102.10	Aliphatic Ester
25	21.24	0.24%	trans-Pinocarveol	1143.75	Monoterpenol
26	22.29	0.15%	Borneol	1168.71	Monoterpenol
27	22.70	0.48%	Terpinen-4-ol	1180.57	Monoterpenol
28	22.96	0.06%	para-Cymen-8-ol	1185.25	Monoterpenol
29	23.21	5.40%	alpha-Terpineol	1191.71	Monoterpenol
30	23.44	2.92%	Estragole	1193.40	Phenylpropanoid
31	24.21	0.07%	trans-Carveol	1223.14	Monoterpenol
32	24.50	0.25%	Nerol	1230.67	Monoterpenol
33	25.48	5.73%	Geraniol	1255.29	Monoterpenol
34	25.49	Co-Eluting	UK Myrtle		
35	25.63	0.16%	Methyl Citronellate	1261.00	Monoterpene Ester
36	27.08	0.41%	Carvacrol	1304.40	Monoterpenol
37	27.84	0.10%	Methyl geranate	1323.80	Monoterpene Ester
38	27.99	2.03%	Myrtenyl acetate	1329.00	Monoterpene Ester
39	28.79	2.27%	alpha-Terpinyl acetate	1353.00	Monoterpene Ether
40	29.18	0.22%	Neryl acetate	1362.90	Monoterpene Ester
41	29.29	0.14%	UK Myrtle		
42	29.80	1.52%	Geranyl acetate	1379.20	Monoterpene Ester
43	30.51	0.86%	Methyl Eugenol	1407.27	Phenylpropanoid

