

**Cypress Leaf**  
*(Cupressus sempervirens)*  
 Lot# CRX20-XY  
 Country: Crete

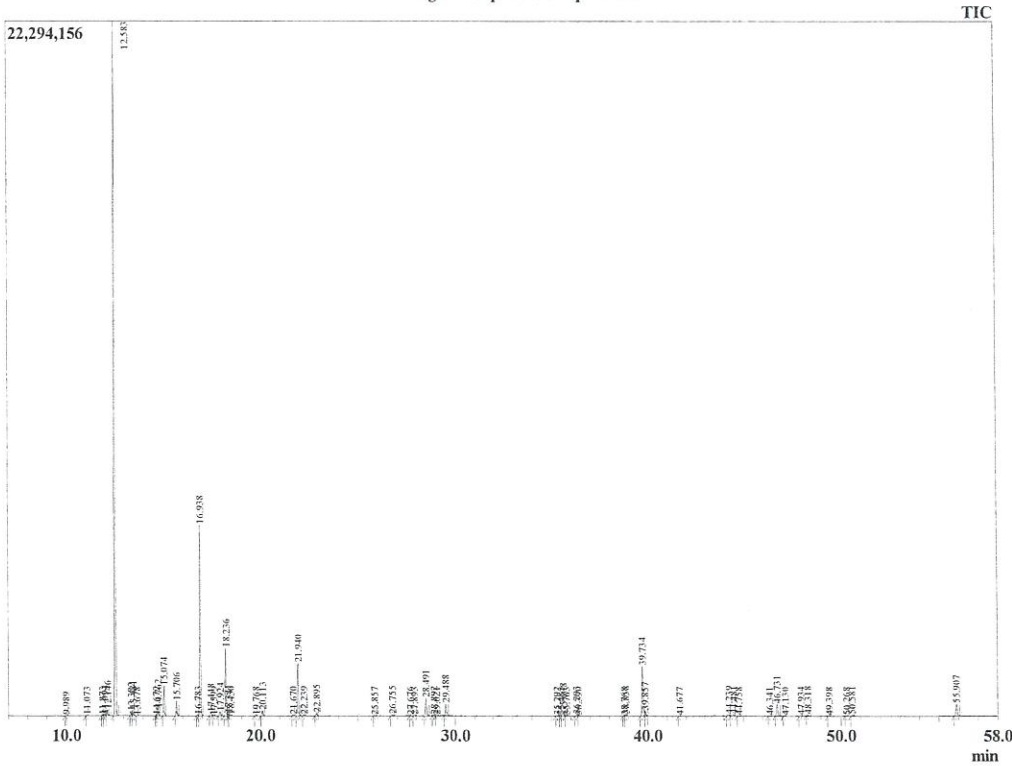


**Ancient Healing Oils, LLC**  
 (800)409-0995  
 260 Maple Street  
 Friendsville, MD 21531  
 www.AncientHealingOils.com  
 John@AncientHealingOils.com

Analyzed : 7/25/2018 10:15:33 PM  
 Sample Type : Essential Oil  
 Sample Name : Cupressus sempervirens  
 Injection Volume : 0.10

Sample Information

Chromatogram Cupressus sempervirens



R.Time	Name	Area%
9.989	Santene	0.03
11.073	Bornylene	0.03
11.873	Hashishene	0.04
11.994	Tricyclene	0.12
12.146	alpha-Thujene	0.44
12.583	alpha-Pinene	53.17
13.382	alpha-Fenchene	0.33
13.481	Camphene	0.45
13.678	Thuja-2,4(10)diene	0.02
14.672	Cymene isomer	0.05
14.762	Sabinene	0.59
15.074	beta-Pinene	2.29
15.706	Myrcene	1.18
16.783	alpha-Phellandrene	0.06
16.938	delta-3-Carene	15.89
17.448	alpha-Terpinene	0.27
17.599	ortho-Cymene	0.03
17.924	para-Cymene	0.36
18.236	Limonene	5.71
18.341	beta-Phellandrene	0.18
18.436	1,8-Cineole	0.05
19.768	Terpinene isomer	0.02
20.113	gamma-Terpinene	0.47
21.670	Terpinolene isomer	0.06
21.940	Terpinolene	4.59
22.239	para-Cymenene	0.08
22.895	Linalool	0.24
25.857	Unidentified	0.04
26.755	Karahanaenone	0.12
27.676	Thuj-3-en-2-one (Umbellulone)	0.03
27.893	Borneol	0.04
28.491	Terpinen-4-ol	1.71
28.892	para-Cymen-8-ol	0.08
29.021	Unidentified	0.03
29.488	alpha-Terpineol	1.18
35.292	Unidentified	0.05
35.483	Unidentified	0.03
35.608	Bornyl acetate	0.45
35.763	Isobornyl acetate	0.03
36.293	Unidentified	0.13
36.390	Unidentified	0.02
38.768	Unidentified	0.04
38.858	Ocimenyl acetate	0.14
39.734	alpha-Terpinyl acetate	5.11
39.857	gamma-Terpinyl acetate	0.47
41.677	alpha-Copaene	0.03
44.239	alpha-Cedrene	0.21
44.481	beta-Caryophyllene	0.17
44.758	beta-Cedrene	0.05
46.341	Humulen-(v1)	0.04
46.731	alpha-Humulene	1.22
47.130	cis-Cadina-1(6),4-diene	0.03
47.934	trans-Cadina-1(6),4-diene	0.09
48.318	Germacrene D	0.11
49.398	alpha-Muurolene	0.04
50.268	gamma-Cadinene	0.04

**Cypress Leaf (Cont'd)**  
*(Cupressus sempervirens)*  
Lot# CRX20-XY  
Country: Crete

R. Time	Name	Area%
50.581	delta- <i>Cadinene</i>	0.15
55.907	<i>Cedrol</i>	1.37
		100.00