



Essential Validation Services





Sample:

Client: | Appalachian Valley Natural Products
 Sample: | Rose (Rosa damascena)
 Batch # | 2
 CAS Number | 84604-12-6
 Type: | Absolute Oil

Conclusion:

- No adulterants, diluents, or contaminants were detected via this method.
- This oil meets the expected profile for genuine absolute oil of Rose (Rosa damascena).

X

Validated By:



ESSENTIAL VALIDATION SERVICES | 747 SW 2nd AVE GAINESVILLE, FLORIDA 32601 | 317-361-5044

Essential Validation Services

747 SW 2nd Ave, Gainesville, FL 32601

Phone: 317-361-5044 E-mail: Adam@essentialvalidationservices.com

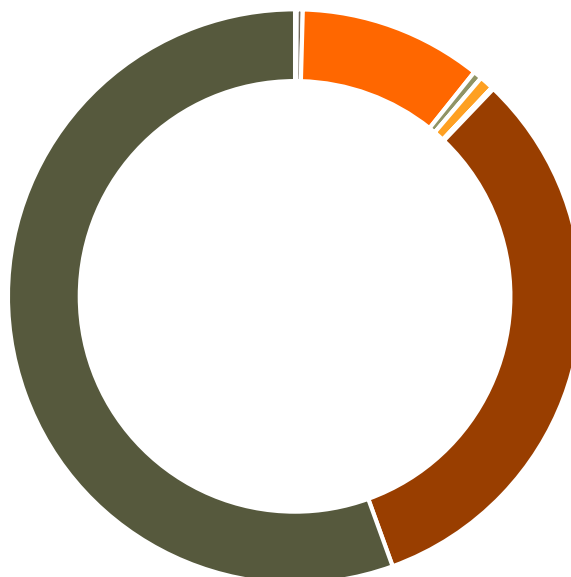
Summary of Analyses

A fresh sample of Rose (Rosa damascena) Absolute Oil (10 uL in .5to.5 mL Hexane + ETOH) was prepared and analyzed via split injection GC/EI-MS.

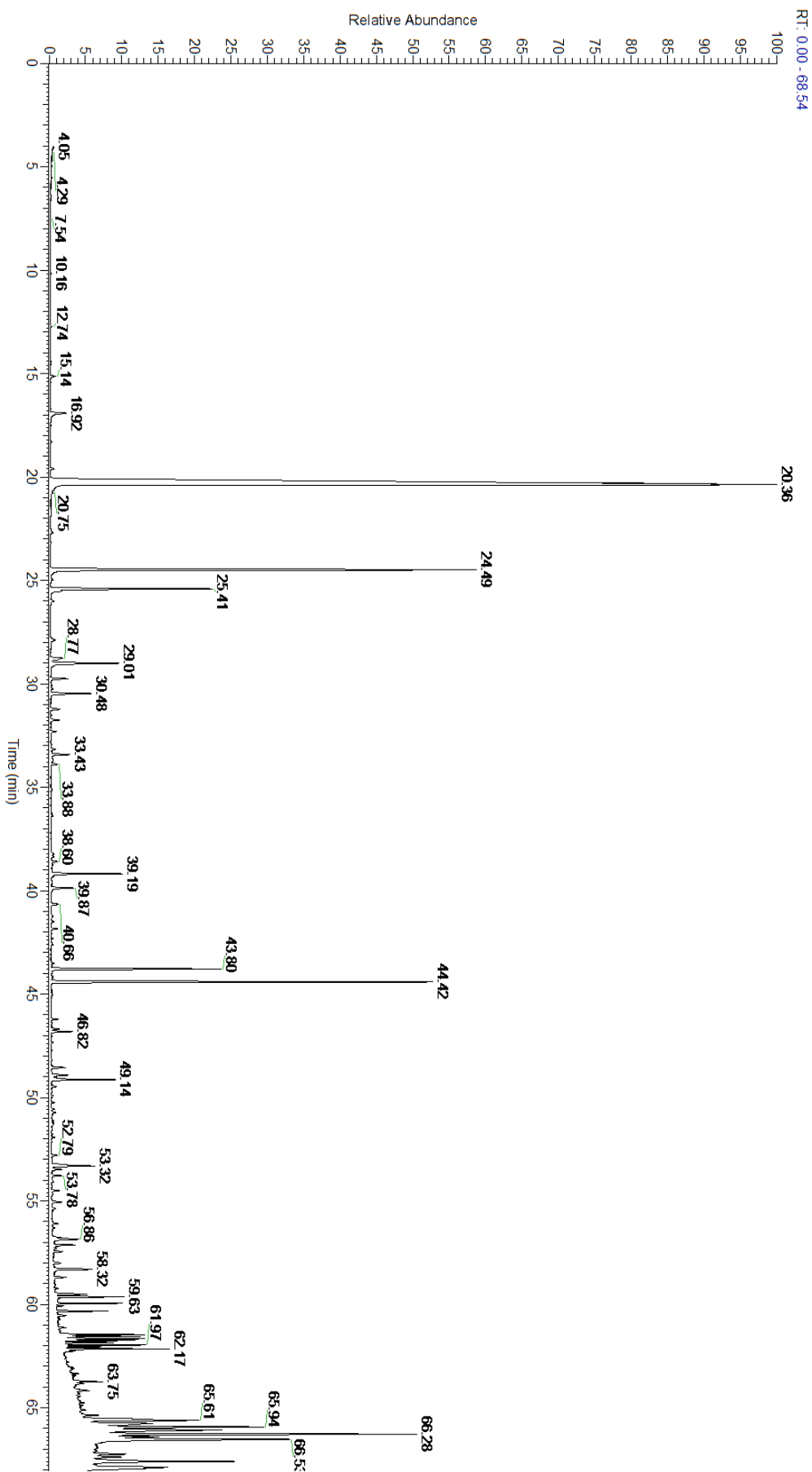


Main Compounds	Percentages
2-Phenylethanol	30.67%
Citronellol	7.42%
Nonadecane	5.62%
Pentacosane	5.05%
Hexacosane	4.56%
Tricosane	2.96%
Heptacosane	2.91%
Tetracosane	2.85%
Geraniol	2.64%
Nonadecene	2.34%
Heneicosane	1.58%
Nonacosane	1.47%
Docosane	1.43%

Monoterpenes	Sesquiterpenes	Monoterpenols	Sesquiterpenols	Ketones
0.09%	0.34%	10.30%	0.50%	0.00%
Esters	Ethers	Aldehydes	Phenols	Other
0.80%	0.02%	0.09%	32.34%	55.52%



- Monoterpenes ■ Sesquiterpenes ■ Monoterpenols
- Sesquiterpenols ■ Ketones ■ Esters
- Ethers ■ Phenols ■ Other





Total Percentage		76.73%			
Peak Number	RT	Area %	Compound Name	RI	Chemical Family
1	12.74	0.02%	alpha-Pinene	936.10	Monoterpene
2	15.14	0.07%	Myrcene	989.20	Monoterpene
3	16.92	0.40%	Benzyl alcohol	1032.00	Simple Phenolic
4	18.30	0.02%	trans-Sabinene hydrate	1072.00	Monoterpenol
5	19.59	0.06%	Linalool	1099.00	Monoterpenol
6	20.36	30.67%	2-Phenylethanol	1116.30	Simple Phenolic
7	20.75	0.02%	trans-Rose oxide	1127.33	Monoterpene Ether
8	22.71	0.04%	Terpinen-4-ol	1180.57	Monoterpenol
9	24.49	7.42%	Citronellol	1229.25	Monoterpenol
10	24.66	0.02%	Nerol	1230.67	Monoterpenol
11	24.96	0.03%	Neral	1246.57	Monoterpene Aldehyde
12	25.41	2.64%	Geraniol	1255.29	Monoterpenol
13	25.52	0.18%	2-Phenylethyl acetate	1257.00	Phenolic Ester
14	26.00	0.06%	Geranial	1272.00	Monoterpene Aldehyde
15	28.77	0.31%	Citronellyl acetate	1357.83	Monoterpene Ester
16	29.01	1.27%	Eugenol	1365.89	Phenylpropanoid
17	29.76	0.26%	Geranyl acetate	1379.20	Monoterpene Ester
18	30.09	0.02%	beta-Bourbonene	1388.70	Sesquiterpene
19	31.76	0.14%	alpha-Guaiene	1438.67	Sesquiterpene
20	32.31	0.08%	alpha-Humulene	1461.43	Sesquiterpene
21	33.88	0.10%	delta-Guaiene	1511.50	Sesquiterpene
22	38.60	0.10%	Tetradecanol	1677.67	Monoterpenol
23	39.19	1.03%	Heptadecane	1700.00	Alkane
24	39.87	0.38%	(Z,E)-Farnesol	1723.00	Sesquiterpenol
25	40.66	0.12%	(E,E)-Farnesol	1742.60	Sesquiterpenol
26	43.51	0.05%	2-Phenylethyl benzoate	1841.00	Phenolic Ester
27	43.80	2.34%	Nonadecene	1855.00	Alkene
28	44.42	5.62%	Nonadecane	1900.00	Alkane
29	63.75	0.45%	Eicosane	2000.00	Alkane
30	65.61	1.58%	Heneicosane	2100.00	Alkane
31	65.77	1.43%	Docosane	2200.00	Alkane
32	65.94	2.96%	Tricosane	2300.00	Alkane
33	66.08	2.85%	Tetracosane	2400.00	Alkane
34	66.28	5.05%	Pentacosane	2500.00	Alkane
35	66.53	4.56%	Hexacosane	2600.00	Alkane
36	67.60	2.91%	Heptacosane	2700.00	Alkane
37	67.89	1.47%	Nonacosane	2900.00	Alkane

ESSENTIAL VALIDATION SERVICES | 747 SW 2ND AVE GAINESVILLE, FLORIDA 32601 | 317-361-5044